



FJDTrion SG10

SNOW REMOVAL GUIDANCE SYSTEM

SNOW REMOVAL, CLEARLY GUIDED

FJD Trion SG10 provides real-time visual guidance for snow removal. It shows obstacles, restricted areas, and road edges on screen, helping operators clear snow more safely in winter conditions.



Fusion Positioning

Real-time
cm Level Accuracy



Rapid Setup

5 min Installation
10 min Calibration



5 MP Camera

Remote Monitoring



Up to 15h

Continuous Operation



1408 channels

Stable Tracking



Wi-Fi, BT

Wireless Connection



4G Modem

LTE-FDD. LTE-TDD.
WCDMA GSM/EDGE



AIoT

Interconnected Data,
Real-Time Updates

Global Coordinate Systems

6,000+ predefined coordinate systems worldwide. Quick setup for different regions, without extra configuration.



Multi-Layer Support

Works with DWG, DXF, SHP, KML, and XML files. Clear layer display for complex project drawings.



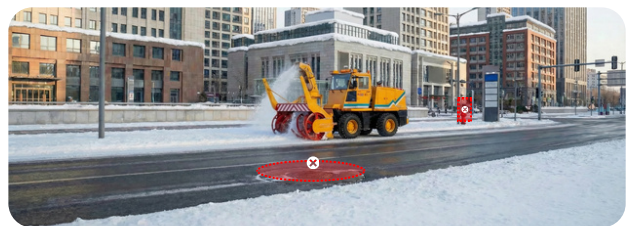
Track Your Position

Tracks the vehicle front position in real time, keeping snow removal precise, even when the road is hidden by snow.



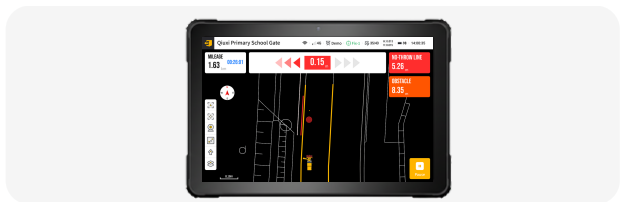
Avoid Hidden Risks

Detects obstacles, restricted areas, and road edges ahead. Clear alerts help operators work safely in low-visibility winter conditions.



Stay on Track in Real Time

Provides real-time guidance to reduce missed areas and overlapping passes.



See Boundaries in the Dark

Makes boundaries visible in low visibility — for safer work at night and in heavy snowfall.



FROM SNOW TO CLOUD

Trion Project Management brings field operations into one clear view. Snow removal data is uploaded in real time, giving an instant visibility into vehicles, routes, and progress.



Digital Scene Modeling

Mark obstacles, restricted zones, and road edges online. Keep snow-removal boundaries clear.



Live Video Perception

Check snow conditions in real time via live video.



Tracking & Smart Reporting

Track vehicle status in real time. Generate operation records you can review and report on.



Fleet Collaborative Operation

Manage multiple vehicles in one place. Share data across the fleet to keep large-scale snow removal organized.

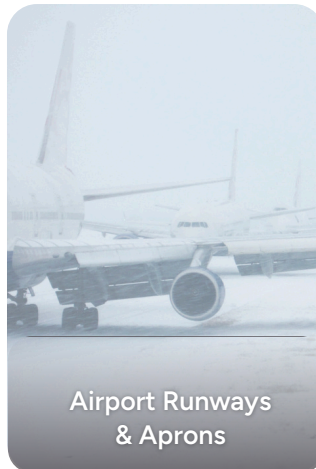
HELPS YOU GET IT RIGHT, ANYWHERE



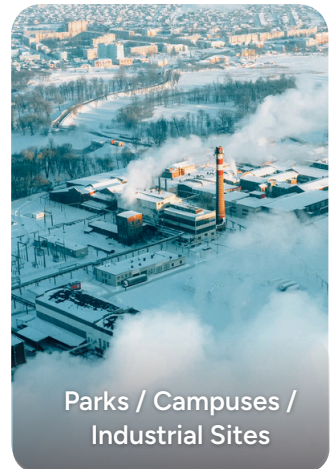
Municipal Road
Snow Removal



Highway & Bridge
Maintenance



Airport Runways
& Aprons



Parks / Campuses /
Industrial Sites

SPECIFICATIONS

GNSS Receiver

GNSS

Channels	1408
GPS	L1C/A, L1C, L2P (Y), L2C, L5
GLONASS	G1, G2, G3
Beidou	B1I, B2I, B3I, B1C, B2a, B2b
Galileo	E1, E5a, E5b, E6
QZSS	L1C/A, L1C, L2C, L5, L6*
SBAS	L1C/A

*Support by a firmware upgrade.

Communications and Data Storage

SIM card type	Nano
Network modem	TDD-LTE, FDD-LTE, WCDMA, EDGE, GPRS, GSM
Wi-Fi	2.4&5 GHz, 802.11a/b/g/n/actouch pairing
BT	BT4.2 & BLE
Built-in UHF radio	Protocol: TRIMTALK, TRIMMARK III, TT450S, TRANSEOT, Satel 3AS 4FSK, Lora
Range: typical 6-12 km, up to 16km with optimal conditions ¹	
Data formats	Input&Output: NMEA-0183, RTCM3.X; Input: RTCM2.X, CMR
Data storage	32 GB internal memory

¹ Ideal environment

Camera

Sensor resolution	Forward: 5 MP, downward: 5 MP
Field of view	83°

Hardware

Temperature	Operating: -35°C to +65°C ; Storage: -40°C to +70°C
Ingress protection	IP68, dustproof, protected from continuous
Humidity	95% non-condensation
Li-ion battery capacity	Built-in battery 4900 mAh, 7.4V & 30 W PD Fast Charge
Operating time on internal battery	Rover 15 h, Base 10 h
External power input	9-28 V DC
Dimensions (DxH)	130×68 mm
Weight	Approximately 800g
Tilt sensor	Immune to magnetic disturbances

Note: The battery life is subject to the operation environment working temperature, and working mode. It has a standard lifespan in normal operating conditions.

Free Quote: sales@fjdtrion.com

Copyright © FJDynamics. All rights reserved.

Receiver Installation Kit

RTK Suction Cup Base	Diameter: 75 mm; Height: 18 mm
RTK Suction Cup Mounting Rod	M12 to 5/8, Length=100 mm
Radio Antenna Extension Cable & Mounting Bracket	Connector: SMA Cable Length: 250 mm
Measuring Tape	Length: 10 m Accuracy Class I (Full-length error ≤ ±1.1 mm)

Tablet T10

ROM+RAM	4GB+64GB
Operating system	Android 15
Wi-Fi	2.4GHz/5.8GHz, IEEE802.11 a/b/g/n/ac
BT	BT5.0 & BLE, Range: 5-10 m
Product size	251 x 170 x 17 mm
Weight	<700g
Display screen	10 inches, IPS 1280 x 800
Hybrid slot	SIM x 1, SIM/TF x1
Connectivity	USB Type-C with OTG support
Temperature	Operating: -20°C to +55°C ; Storage: -40°C to +70°C
Humidity	95% non-condensation
Ingress protection	IP66, dustproof, protected from continuous

Tablet Mounting Kit

Triple Suction Cup Mount	Three suction cups; Diameter: 85 mm (each)
Tablet Back Clamp	Dimensions: 191 × 224 × 28 mm
Tablet Mounting Rod	Diameter: 63 mm; Length: 210 mm

Build on Precision, From Vision to Reality

FJDTrion

